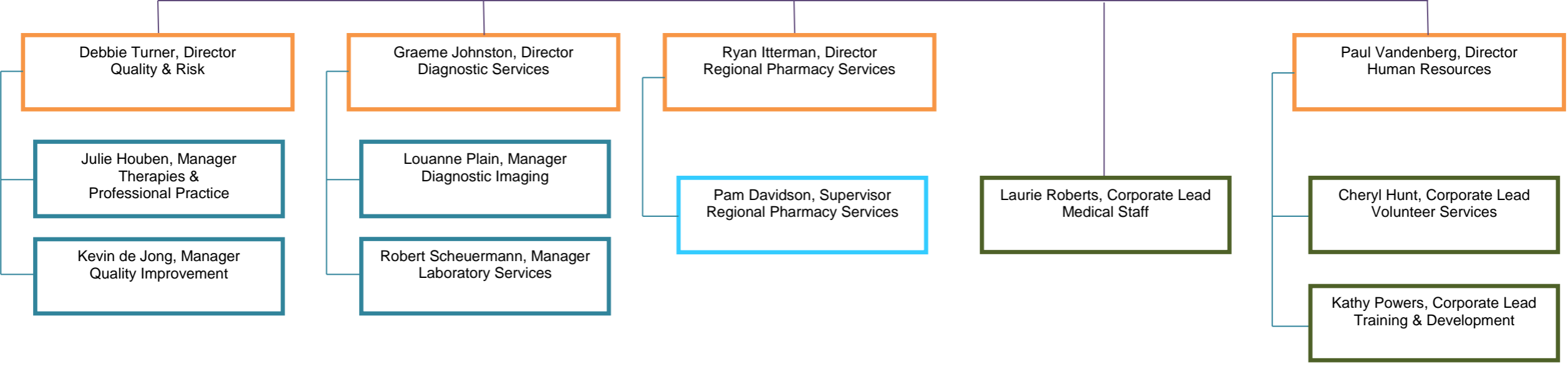


Corporate Accountability Framework



Operational Accountability Framework

Vice President People & Chief Quality Executive
Mary Cardinal





Operational Accountability Framework

Vice President Partnerships & Chief Nursing Executive
Anne Campbell

Kathie Cuerden, Director Patient Care

Jane Graul, Director Nutrition & Food Services, Clinical Nutrition & Diabetes

Penny Cardno, Director Patient Care

Michelle Jones, Corporate Lead Patient Experience & Privacy

VACANT Surgical Services & MDRD
> Donnalene Tuer Hodes, Interim Manager, Peri-Operative, Day Surgery, MDRD
 > Patricia Harper, Interim Manager, Inpatient Surgery

Ann Watt, Manager Huron Perth Diabetes Education

Laurie Schalk, Manager OP/IP Medicine, Dialysis, Chemotherapy (Stratford Site)

Deanna Wright, Manager ED (Stratford Site), CCU, Telemetry, ISU, Cardiorespiratory

Andrea Carter, Brenda Wagler, Lisa Upshall, Supervisors Nutrition & Food Services

Mike Fleming Interim Manager Inpatient Unit, ED & OR (Clinton Site)

Kerri Hannon, Manager Maternal Child

Margie Ladino, Supervisor MDRD

Jane Rundle, Manager Inpatient Unit & ED (St. Marys Site)

Bonita Thompson, Manager District Stroke Program

Michelle Wick, Manager Inpatient Unit & ED (Seaforth Site)

Michele Pardo, Manager Outpatient Mental Health

Leslie Brown, Manager Patient Flow & Nursing Practice

Christina Sebben, Manager Inpatient Mental Health

Mary Louise LaBerge, Manager Preschool Speech & Language



Operational Accountability Framework

