

Corporate Accountability Framework

Board Committees

Board of Directors

Foundations

Auxiliaries/Volunteers

President & Chief Executive Officer
Andrew Williams

Alliance Chief of Staff
Dr. Laurel Moore

Medical Advisory Committee

Vice President People & Chief Quality Executive
Mary Cardinal

Vice President Partnerships & Chief Nursing Executive
Anne Campbell

Vice President Performance & Chief Financial Executive
Ken Haworth

Debbie Turner, Director Quality & Risk

Ryan Itterman, Director Regional Pharmacy Services

Paul Vandenberg, Director Human Resources & Environmental Services

Graeme Johnston, Director Diagnostic Services

Laurie Roberts, Corporate Lead Medical Staff

Penny Cardno, Director Patient Care

Kathie Cuerden, Director Patient Care

Jane Gaul, Director Nutrition & Food Services, Diabetes

Michelle Jones, Corporate Lead Patient Experience & Privacy

Iris Michaels, Director Decision Support & Financial Planning

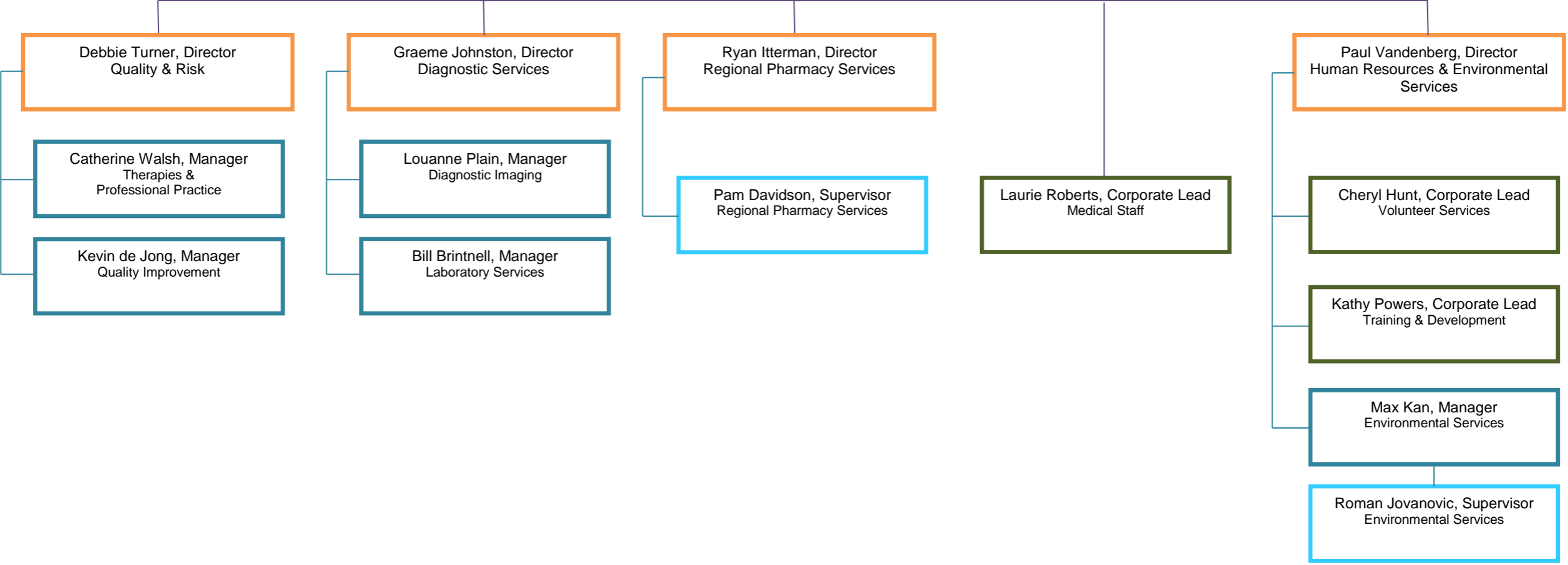
Doug Biesinger, Director Facilities Management

John Brennan, Regional Director Information Technology, Communications & Materials Management



Operational Accountability Framework

Vice President People & Chief Quality Executive
Mary Cardinal





Operational Accountability Framework

Vice President Partnerships & Chief Nursing Executive
Anne Campbell

Kathie Cuerden, Director
Patient Care

Jane Graul, Director
Nutrition & Food Services,
Clinical Nutrition & Diabetes

Penny Cardno, Director
Patient Care

Michelle Jones, Corporate Lead
Patient Experience & Privacy

Lori Merner, Manager
Surgical Services & MDRD

Deanna Wright, Manager
Intensive Care Unit, ISU/Telemetry
Cardiorespiratory

Kerri Hannon, Manager
Maternal Child

Julie Houben, Manager
District Stroke Program

Michele Pardo, Manager
Outpatient Mental Health

Christina Sebben, Manager
Inpatient Mental Health
ED (Stratford)

Ann Watt, Manager
Huron Perth Diabetes Education

Andrea Carter, Brenda Wagler,
Lisa Upshall, Supervisors
Nutrition & Food Services

Margie Ladino, Supervisor
Medical Devices
Reprocessing Department

Laurie Schalk, Manager
Outpatient/Inpatient Medicine,
Dialysis, Chemotherapy (Stratford)

Laura Brown, Manager
Inpatient Unit & ED
(Clinton)

Jane Rundle, Manager
Inpatient Unit & ED
(St. Marys)

Kailyn Pasma, Manager
Inpatient Unit & ED (Seaforth)
Seniors Mental Health,
Primary Care NPs

Leslie Brown, Manager
Patient Flow & Nursing Practice

VACANT, Manager
Preschool Speech & Language



Operational Accountability Framework

