

**Corporate Accountability Framework**

**Board Committees**

**Board of Directors**

**Foundations**

**Auxiliaries/Volunteers**

**President & Chief Executive Officer  
Andrew Williams**

**Alliance Chief of Staff  
Dr. Kevin Lefebvre**

**Medical Advisory Committee**

**Vice President People & Chief Quality Executive  
Mary Cardinal**

**Vice President Partnerships & Chief Nursing Executive  
Deborah Wiseman**

**Vice President Performance & Chief Financial Executive  
Ken Haworth**

**Ryan Itterman, Director Diagnostics, Regional Pharmacy & Chemotherapy**

**Julie Houben, Director Quality & Risk**

**Paul Vandenberg, Director Human Resources & Environmental Services**

**Laurie Roberts, Corporate Lead Medical Staff**

**Michelle Jones, Corporate Lead Patient Experience & Privacy**

**Penny Cardno, Director Patient Care**

**Jane Graul, Director Nutrition & Food Services, Diabetes**

**Jennifer Rascao, Director Patient Care**

**Doug Biesinger, Director Facilities Management**

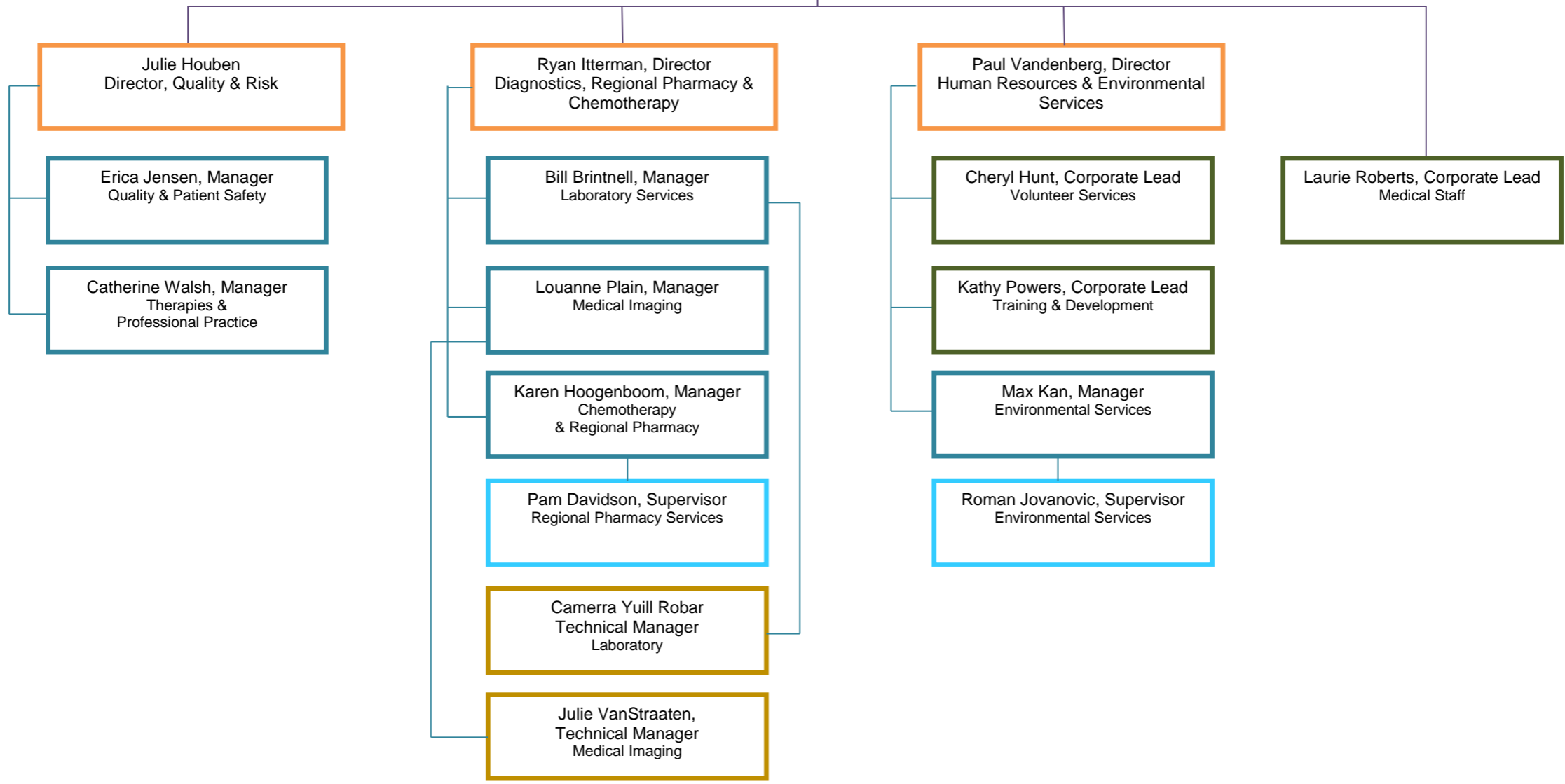
**John Brennan, Regional Director Information Technology, Communications & Materials Management**

**Iris Michaels, Director Financial Planning, Health Information & Data Analytics**



**Operational Accountability Framework**

**Vice President People & Chief Quality Executive  
Mary Cardinal**





**Operational Accountability Framework**

Vice President Partnerships & Chief Nursing Executive  
**Deborah Wiseman**

Jane Graul, Director  
Nutrition & Food Services,  
Diabetes Education, Dialysis

Julie Brown, Manager  
Preschool Speech & Language

Ann Watt, Manager  
Huron Perth Diabetes Education  
Dialysis Unit (Stratford)

Jenna Hazen, Robin Scott,  
Lisa Upshall, Supervisors  
Nutrition & Food Services

Penny Cardno, Director  
Patient Care

Laura Brown, Manager  
Inpatient Unit & ED (Clinton)  
Nursing Practice (HPHA)

Leslie Brown, Manager  
Inpatient/Outpatient Medicine  
Patient Flow

VACANT, Manager  
Inpatient Unit & ED (Seaforth)

Arlene Lanting, Manager  
Inpatient Unit & ED (St. Marys)

Kerri Hannon, Manager  
Maternal Child  
Staffing/Scheduling

Jennifer Rascao, Director  
Patient Care

Lynsy Church, Manager  
Outpatient Mental Health

Alison Coy, Manager  
District Stroke Program

Rebecca Gonser, Manager  
Surgical Inpatients  
Porters, MDRD

Lori Merner, Manager  
Surgical Services  
(Peri-Op, OR, PACU, Day Surgery)

Christina Sebben, Manager  
Inpatient Mental Health  
ED (Stratford)

Deanna Wright, Manager  
Intensive Care Unit, ISU/Telemetry  
Cardiorespiratory

Emily Ohler-Adams, Supervisor  
Medical Devices  
Reprocessing Department (MDRD)



**Operational Accountability Framework**

Vice President Performance & Chief Financial Executive  
**Ken Haworth**

