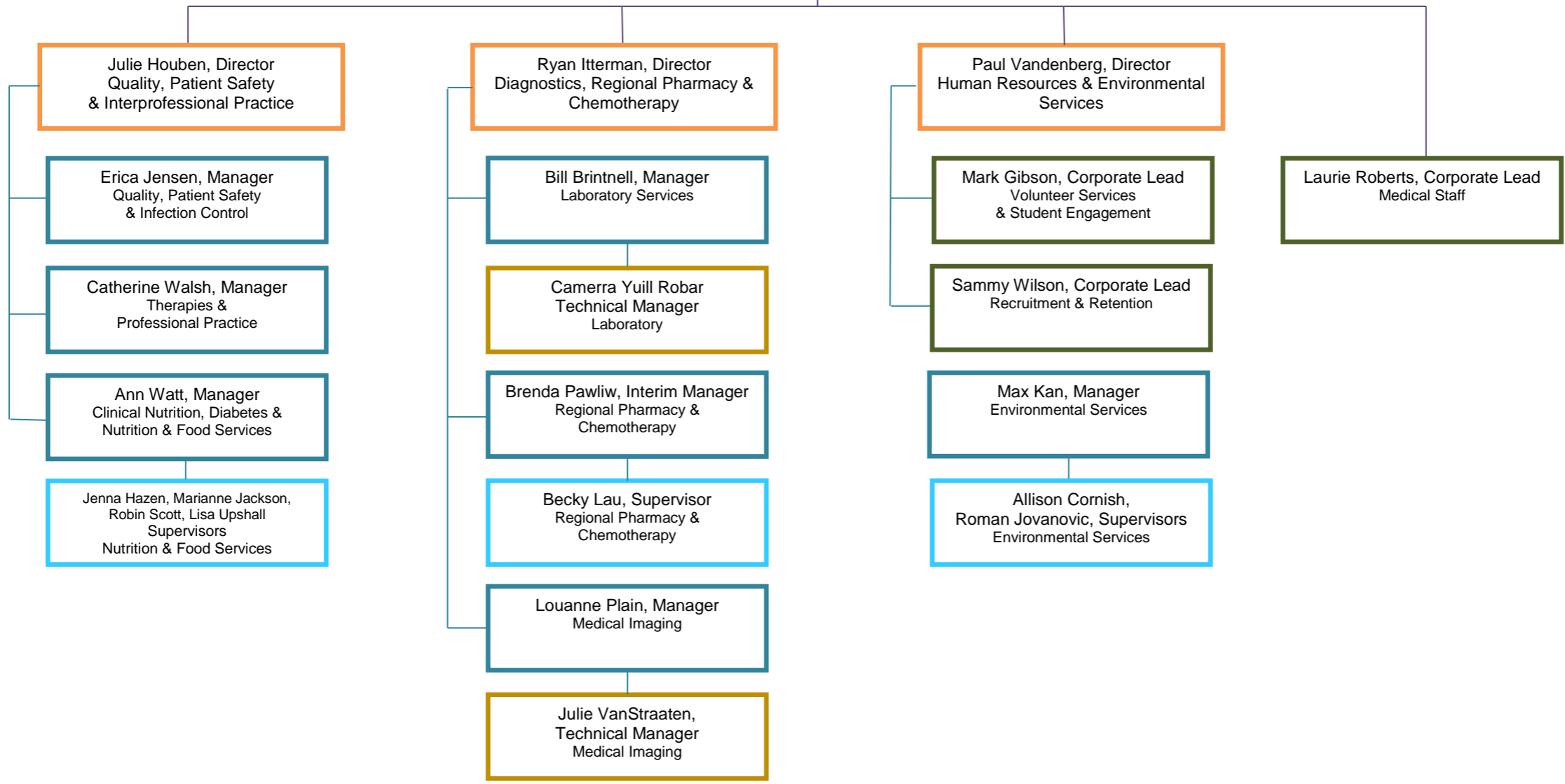




**Operational Accountability Framework**

**Vice President People & Chief Quality Executive  
Mary Cardinal**





**Operational Accountability Framework**

Vice President Partnerships & Chief Nursing Executive  
**Deborah Wiseman**

Lori Merner, Director Patient Care & Nursing Professional Practice/Educators

Julie Brown, Manager  
Preschool Speech & Language & Assessment Centre

Rebecca Gonser, Manager  
Surgical Inpatients Porters, MDRD

Emily Ohler-Adams, Supervisor  
Medical Devices Reprocessing Department (MDRD)

Audra Boersen, Manager  
Maternal Child Staffing/Scheduling

Melissa Rathwell, Manager  
Surgical Services (Peri-Op, OR, PACU, Day Surgery)

Penny Cardno, Director Patient Care

Michele Tyndall, Manager  
Inpatient Unit & ED (Seaforth)

VACANT, Manager  
Inpatient Unit & ED (Clinton)

Leslie Brown, Manager  
Inpatient Medicine Patient Flow

Arlene Lanting, Manager  
Inpatient Unit & ED (St. Marys)

Jennifer Rascao, Director Patient Care & Nurse Practitioner Program

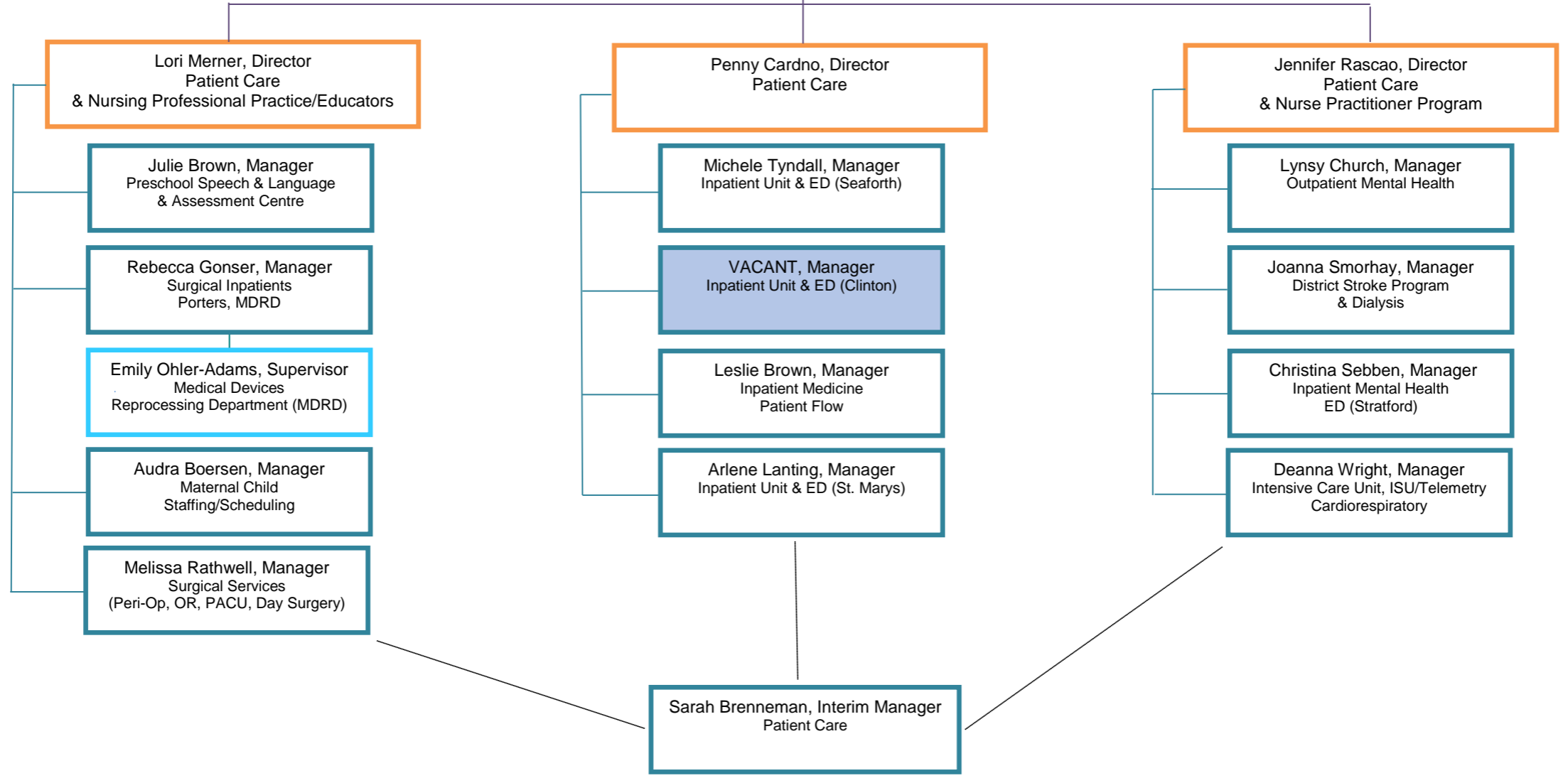
Lynsy Church, Manager  
Outpatient Mental Health

Joanna Smorhay, Manager  
District Stroke Program & Dialysis

Christina Sebben, Manager  
Inpatient Mental Health ED (Stratford)

Deanna Wright, Manager  
Intensive Care Unit, ISU/Telemetry  
Cardiorespiratory

Sarah Brenneman, Interim Manager  
Patient Care





**Operational Accountability Framework**

Vice President Performance & Chief Financial Executive  
**Ken Haworth**

