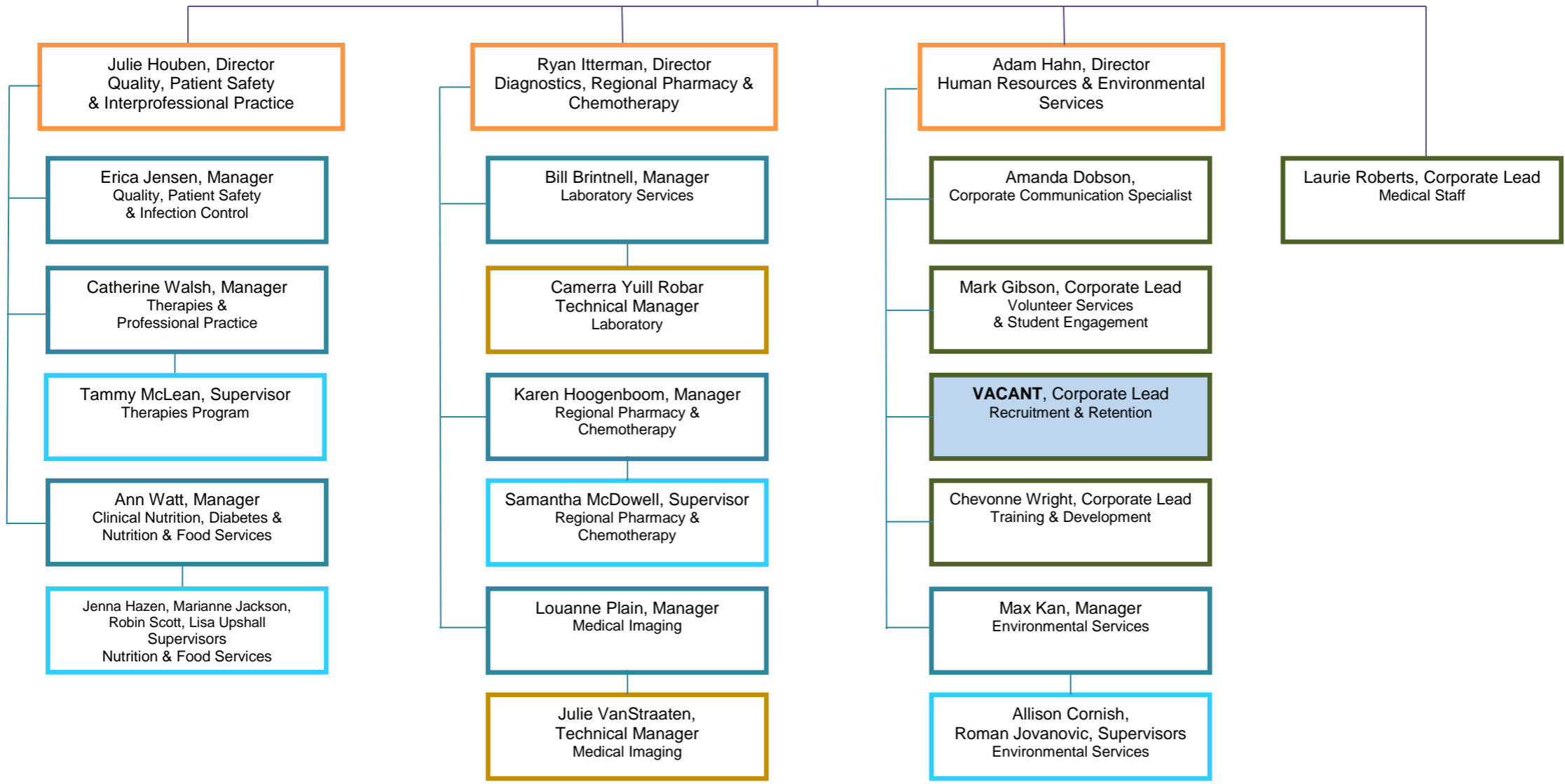




**Operational Accountability Framework**

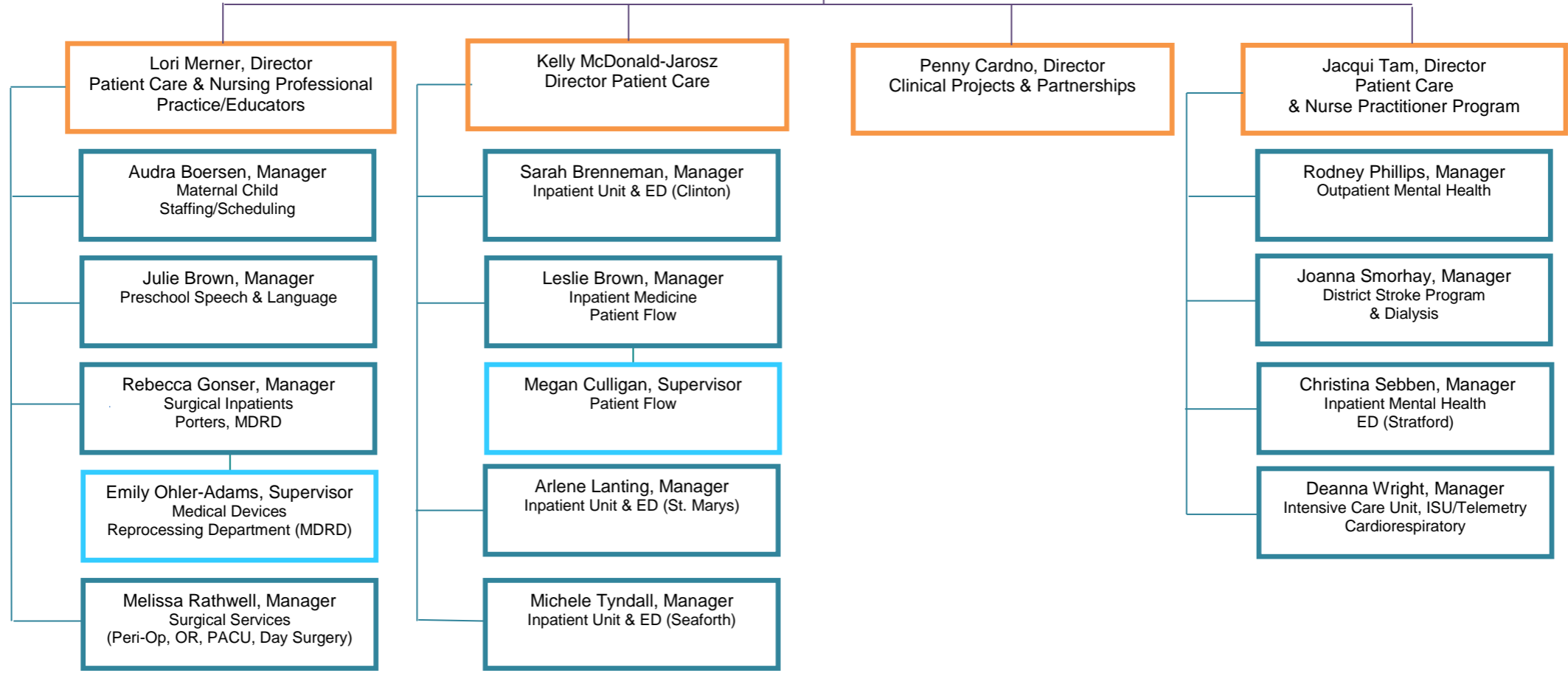
**Vice President People & Chief Quality Executive  
Mary Cardinal**





**Operational Accountability Framework**

**Lynanne Mason**  
Vice President Partnerships  
& Chief Nursing Executive





**Operational Accountability Framework**

**Vice President Performance & Chief Financial Executive  
Ken Haworth**

Jason Lott, Manager  
Finance

Jennifer Lubbers, Manager  
Materials Management

Iris Michaels, Director  
Analytics, Financial Planning & Regional  
Information Management (IMPACT)

Dan Moutte, Manager  
IT Operations

Jenn Penner, Manager  
IT Applications

Angela Schyff, Manager  
Decision Support

Carrie Mills, Manager  
Patient Registration,  
Health Information & Privacy

Lynne Gotts, Supervisor  
Patient Registration  
Bed Allocators

Doug Biesinger, Director  
Facilities Management

John Segeren, Manager  
Facilities Management

Steve Raycraft, Supervisor  
Facilities Management

Luann Strasser, Manager  
Payroll