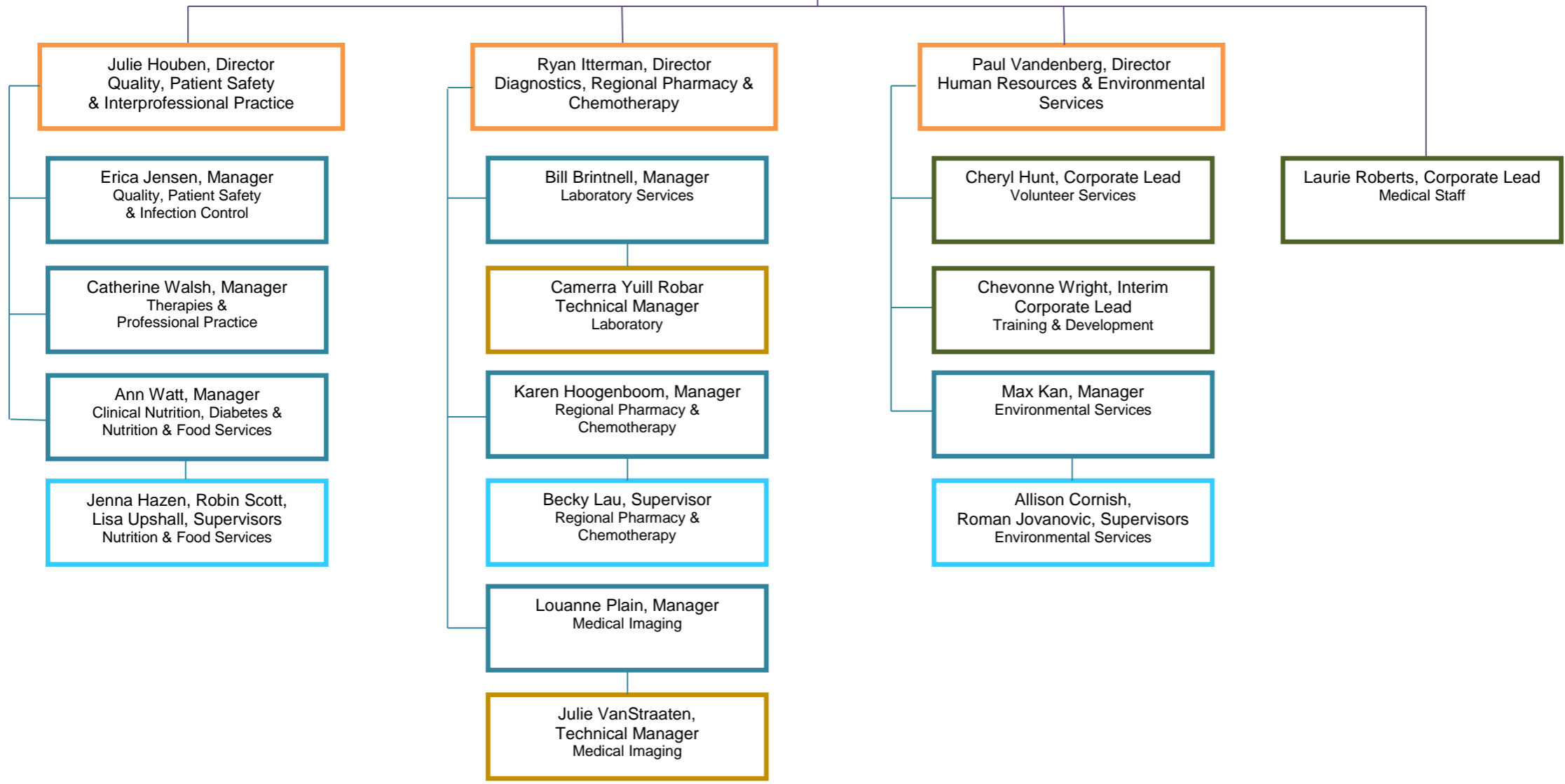




**Operational Accountability Framework**

**Vice President People & Chief Quality Executive  
Mary Cardinal**





**Operational Accountability Framework**

Vice President Partnerships & Chief Nursing Executive  
**Deborah Wiseman**

Lori Merner, Director  
Patient Care  
& Nursing Professional Practice/Educators

Julie Brown, Manager  
Preschool Speech & Language  
& Assessment Centre

Rebecca Gonser, Manager  
Surgical Inpatients  
Porters, MDRD

Emily Ohler-Adams, Supervisor  
Medical Devices  
Reprocessing Department (MDRD)

Crystal Turner, Interim Manager  
Maternal Child  
Staffing/Scheduling

Melissa Rathwell, Manager  
Surgical Services  
(Peri-Op, OR, PACU, Day Surgery)

Penny Cardno, Director  
Patient Care

Audra Boersen, Manager  
Inpatient Unit & ED (Seaforth)

Danielle Gibbs, Manager  
Inpatient Unit & ED (Clinton)

Leslie Brown, Manager  
Inpatient Medicine  
Patient Flow

Arlene Lanting, Manager  
Inpatient Unit & ED (St. Marys)

Jennifer Rascao, Director  
Patient Care  
& Nurse Practitioner Program

Lynsy Church, Manager  
Outpatient Mental Health

Alison Coy, Manager  
District Stroke Program  
& Dialysis

Christina Sebben, Manager  
Inpatient Mental Health  
ED (Stratford)

Deanna Wright, Manager  
Intensive Care Unit, ISU/Telemetry  
Cardiorespiratory



**Operational Accountability Framework**

**Vice President Performance & Chief Financial Executive  
Ken Haworth**

