

Corporate Accountability Framework

Board Committees

Board of Directors

Foundations

Auxiliaries/Volunteers

President & Chief Executive Officer
Andrew Williams

Alliance Chief of Staff
Dr. Kevin Lefebvre

Medical Advisory Committee

Vice President People & Chief Quality Executive
Mary Cardinal

Vice President Partnerships & Chief Nursing Executive
Deborah Wiseman

Vice President Performance & Chief Financial Executive
Ken Haworth

Ryan Itterman, Director Diagnostics, Regional Pharmacy & Chemotherapy

Julie Houben, Director Quality & Risk

Paul Vandenberg, Director Human Resources & Environmental Services

Laurie Roberts, Corporate Lead Medical Staff

Michelle Jones, Corporate Lead Patient Experience & Privacy

Penny Cardno, Director Patient Care

Jane Graul, Director Nutrition & Food Services, Diabetes

Jennifer Rascao, Director Patient Care

Doug Biesinger, Director Facilities Management

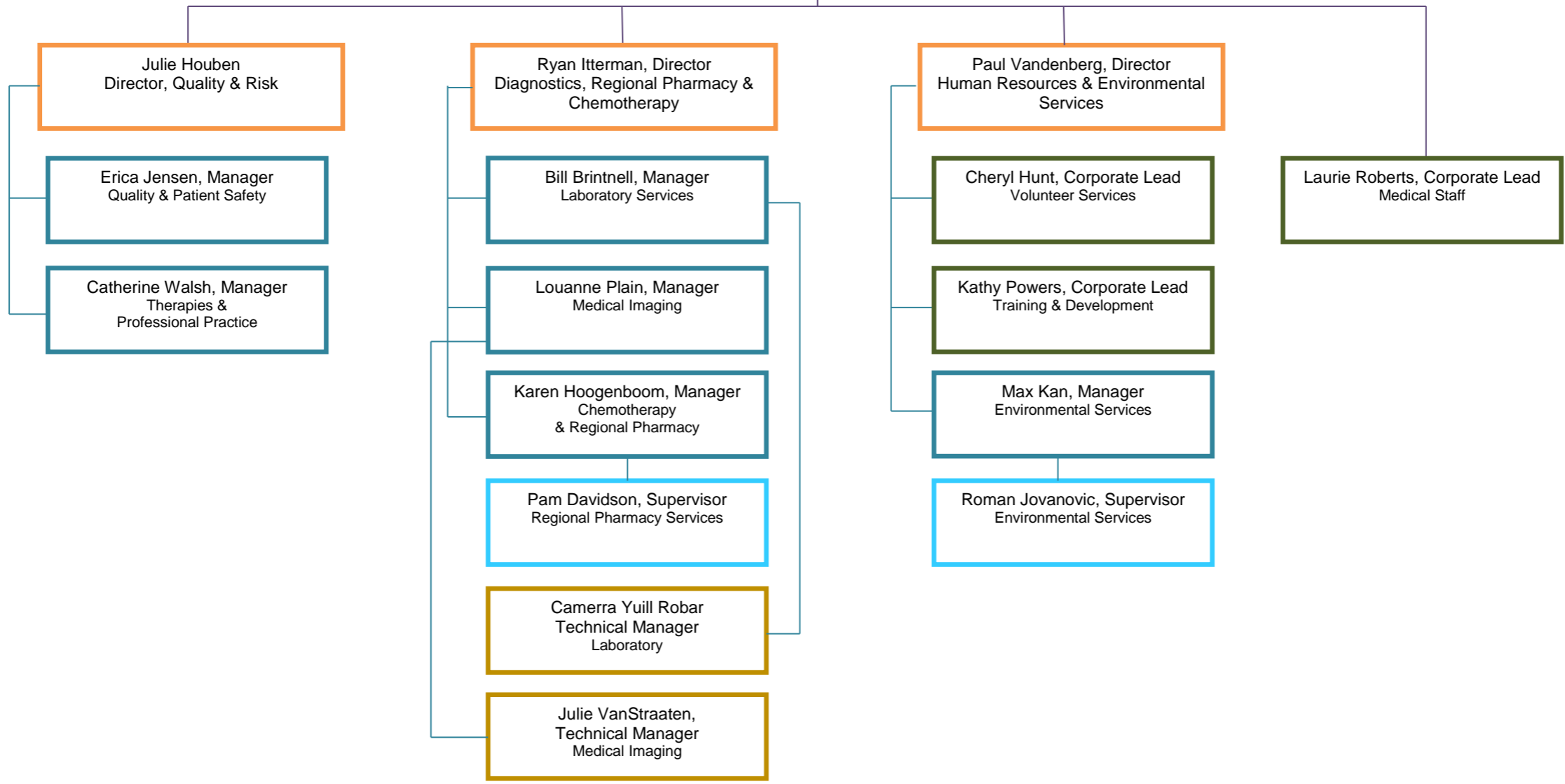
John Brennan, Regional Director Information Technology, Communications & Materials Management

Iris Michaels, Director Financial Planning, Health Information & Data Analytics



Operational Accountability Framework

**Vice President People & Chief Quality Executive
Mary Cardinal**





Operational Accountability Framework

Vice President Partnerships & Chief Nursing Executive
Deborah Wiseman

Jane Graul, Director
Nutrition & Food Services,
Diabetes Education, Dialysis

Julie Brown, Manager
Preschool Speech & Language

Ann Watt, Manager
Huron Perth Diabetes Education
Dialysis Unit (Stratford)

Jenna Hazen, Robin Scott,
Lisa Upshall, Supervisors
Nutrition & Food Services

Penny Cardno, Director
Patient Care

Laura Brown, Manager
Inpatient Unit & ED (Clinton)
Nursing Practice (HPHA)

Leslie Brown, Manager
Inpatient/Outpatient Medicine
Patient Flow

Kerri Hannon, Manager
Inpatient Unit & ED (Seaforth)

Arlene Lanting, Manager
Inpatient Unit & ED (St. Marys)

VACANT, Manager
Maternal Child
Staffing/Scheduling

Jennifer Rascao, Director
Patient Care

Lynsy Church, Manager
Outpatient Mental Health

Alison Coy, Manager
District Stroke Program

Rebecca Gonser, Manager
Surgical Inpatients
Porters, MDRD

Lori Merner, Manager
Surgical Services
(Peri-Op, OR, PACU, Day Surgery)

Christina Sebben, Manager
Inpatient Mental Health
ED (Stratford)

Deanna Wright, Manager
Intensive Care Unit, ISU/Telemetry
Cardiorespiratory

Emily Ohler-Adams, Supervisor
Medical Devices
Reprocessing Department (MDRD)



Operational Accountability Framework

Vice President Performance & Chief Financial Executive
Ken Haworth

